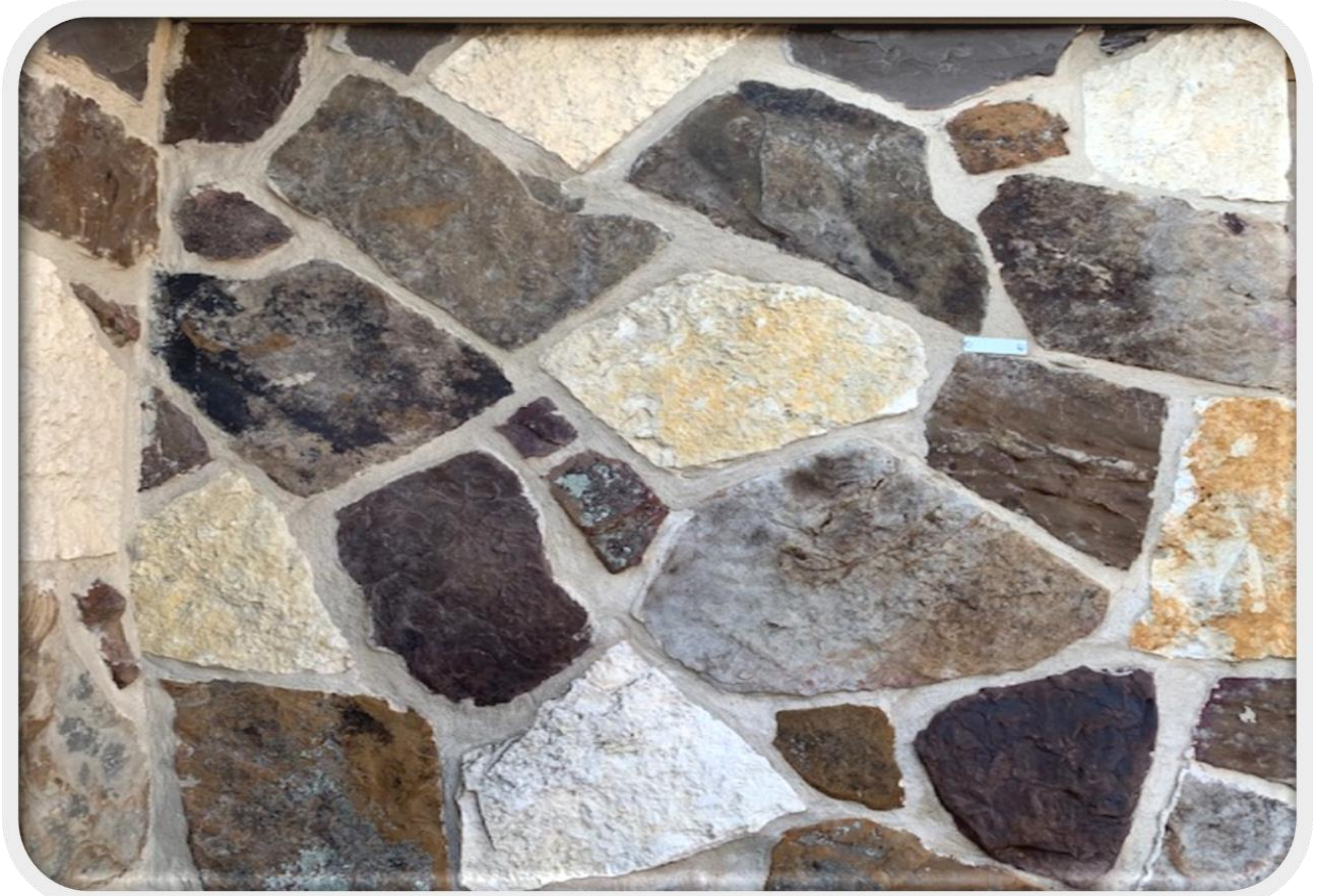




Aztecstoneempire.com  
5055 Buford Hwy., Norcross, Ga  
770 368-9337 info@aztecstoneempire.com



## **#138 Aztec Blend (white mortar joints)**

A majestic blend of stones with a combination of neutral tones and browns that give you a fresh contemporary feel. The mosaic shape and color mix adds a natural look to any application, accent walls, house siding, fireplaces and entry walls are among the most commonly used.

1"- 1.5" thickness for thin veneer walls, sold by the sqft., corners by the linear foot

3"-5" for full veneer, average of 35-40 sqft. per ton.

Add your personal touch with a color joint of your preference.

Contact one of our sales associates for more details.